

## Sizes of Chocolate:

### Swiss Chocolate Slabs Bulk

#### Big size slabs, 35 x 25 cm

for bulk sale in specialized shops,  
you brake it and sell it by weight

**700 g per slab**

### Retail Chocolate Slabs

#### Ready for sale, 11 x 16 cm

in transparent packaging with header

**100 g per slab**

## Terms and Conditions:

Shelf life	6 months frozen, once taken out of the freezer additional 6 months shelf life refrigerated
Minimum order	10 boxes per order
Lead time	2 – 3 weeks
Terms	exworks Engi, Incoterms 2000

## Packaging:

Units	4 trays per box, one article per box
Weight	2.8 kg weight, 2.59 kg net weight
Size of box	400 x 270 x 135 mm
Pallet	8 boxes per layer, 10 layers per pallet 80 boxes per pallet
Pallet size	1200 x 800 x 1550 mm
Pallet weight	ca. 250 kg

**Hefti Swiss Fine Chocolate**  
Glerner Feingebäck Ltd.

✉ Sernftalstrasse 92  
CH-8765 Engi / GL  
Switzerland

☎ +41 55 642 52 02  
@ ufaes@feinback.ch  
🏠 [www.swissfinebakery.com](http://www.swissfinebakery.com)

### Swiss Chocolate Slabs Bulk

#### Big size slabs, 35 x 25 cm

for bulk sale in specialized shops, tablets  
broken in half with same weight you can

sell per piece at a fix price, **50 g per slab**

### Retail Chocolate Slabs assorted

#### Ready for sale, 8 x 11 cm

in transparent packaging with header

three different types of chocolates, **100 g per slab**

**Hefti**  
swiss fine  
chocolate

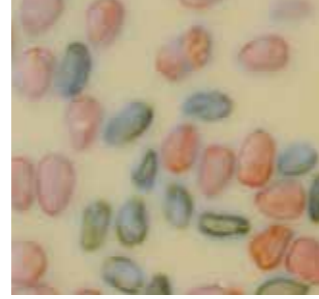
# Swiss Quality Chocolate Slabs with Caramelized Nuts

Experience the pure handmade indulgence





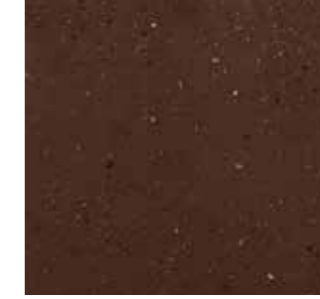
71300 -  
**Milk Chocolate**  
with whole caramelized  
hazelnuts, 700 g



71304 -  
**White Chocolate**  
with whole caramelized  
almonds & pistachios, 700 g



71307-  
**Milk Chocolate**  
with cream caramel cubes,  
700 g  
**seasonal article!**



71311 -  
**Dark Chocolate**  
with peppermint, 700 g  
**seasonal article!**



71301 -  
**Dark Chocolate**  
with whole caramelized  
hazelnuts, 700 g



71305 -  
**Milk Chocolate**  
with caramelized almond  
slices «Florentins», 700 g



71308 -  
**White Chocolate**  
with rose pepper, 700 g  
**seasonal article!**



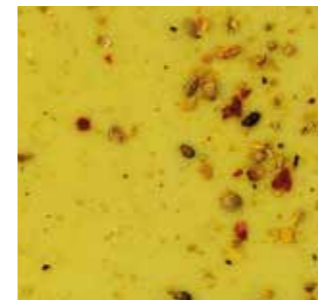
71312 -  
**Dark Chocolate**  
with nutmix «fleur de sel»,  
containing slightly salted  
almonds, hazelnuts and  
cashew nuts, 700 g  
**seasonal article!**



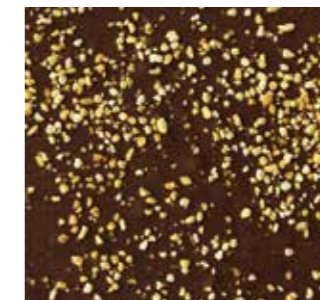
71302 -  
**Milk Chocolate**  
with whole caramelized  
almonds, 700 g



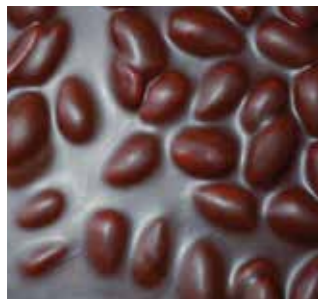
71306 -  
**Dark Chocolate**  
with caramelized almond  
slices «Florentins», 700 g



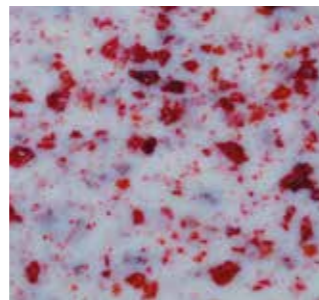
71309 -  
**White Chocolate**  
with curry, 700 g  
**seasonal article!**



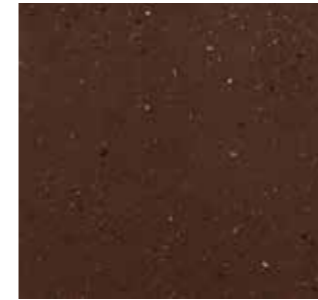
71313 -  
**Milk Chocolate**  
with crispy nougat, 700 g  
**seasonal article!**



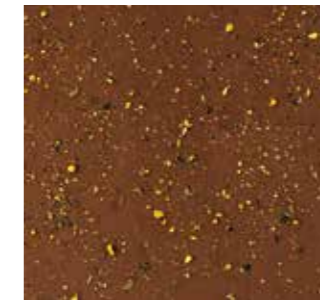
71303 -  
**Dark Chocolate**  
with whole caramelized  
almonds, 700 g



71315 -  
**White Chocolate**  
with raspberry and blackberry,  
700 g  
**seasonal article!**



71310 -  
**Dark Chocolate**  
with green tea, 700 g  
**seasonal article!**



71314 -  
**Milk Chocolate**  
with orange pepper, 700 g  
**seasonal article!**